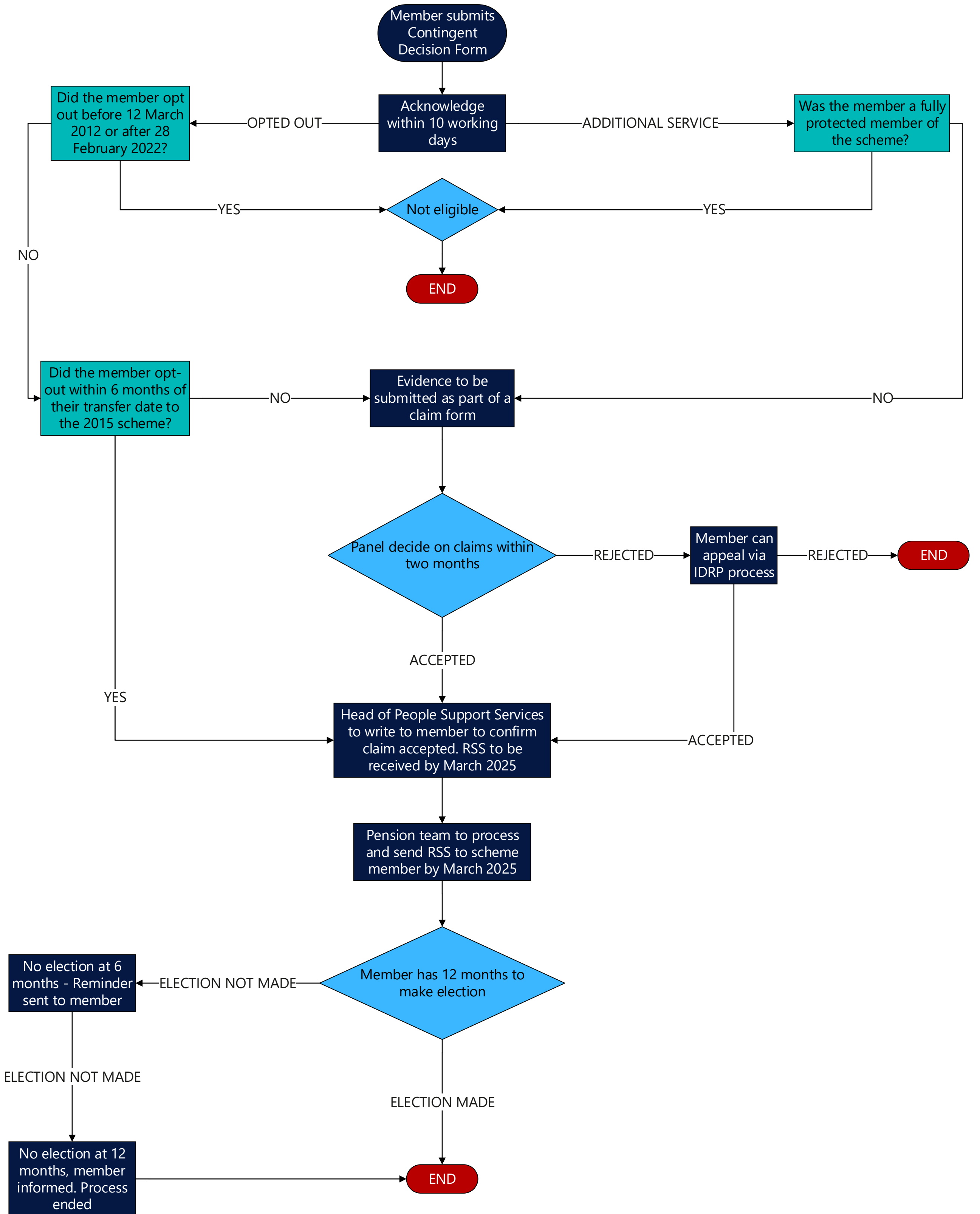




Firefighter Pension Scheme Contingent Decision Process





Firefighter Pension Scheme Contingent Decision Process

Accessible text version of flow chart

1. Member submits Contingent Decision Form – Go to 2
2. Acknowledged within 10 working days – Go to 3
3. Does additional service apply?
 - a. Yes – Go to 5
 - b. No – Go to 4
4. Does opted out apply?
 - a. Yes – Go to 5
 - b. No – Go to 7
5. Was the member a fully protected member of the scheme?
 - a. Yes – Not eligible – process ends
 - b. No – Go to 9
6. Did the member opt out before 12 March 2012 or after 28 February 2022?
 - a. Yes – go to 8
 - b. No – Go to 7
7. Did the member opt-out within 6 months of their transfer date to the 2015 scheme?
 - a. Yes – Go to 12
 - b. No – Go to 9
8. Member is not eligible – process ends.
9. Evidence to be submitted as part of a claim form – Go to 10
10. Panel decide on claims within two months
 - a. Accepted – Go to 12
 - b. Rejected - Member can appeal via IDR process – Go to 11
11. Member can appeal
 - a. Appeal accepted – Go to 12
 - b. Appeal rejected – process ends.
12. Head of People Support Services to write to member to confirm claim accepted. RSS to be received by March 2025 – Go to 13
13. Pension team to process and send RSS to scheme member by March 2025 – Go to 14
14. Member has 12 months to make election
 - a. Election made - process ends.
 - b. Election not made within 6 months – Go to 15
15. Election Not Made in 6 months – a reminder is sent to the member
 - a. Election then made after 6 months, but before 12 months – process ends
 - b. Election not made after 6 months – Go to 16
16. Election not made within 12 months – member is notified – process ends.