

Temporal Analysis - All Incidents

Total Incidents 1st April 2008 - 31st March 2011 Temporal Analysis: Month

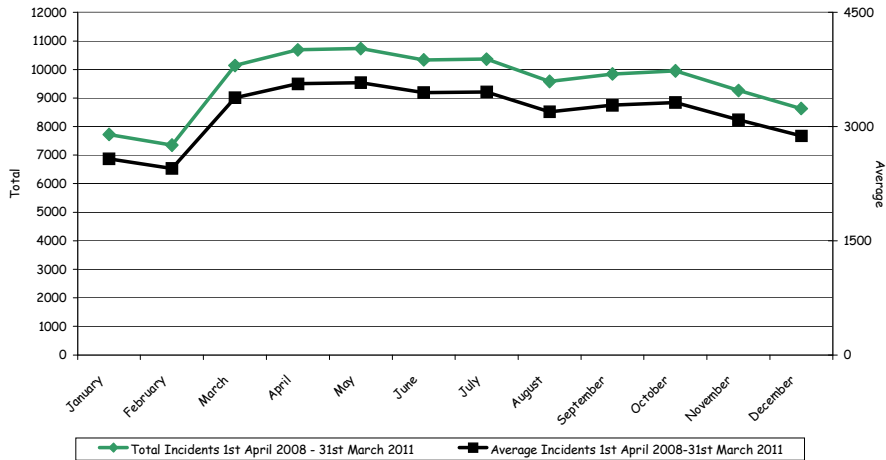


Figure 1: Total Incidents Reported to and Recorded by WMFS (Including Over The Border Calls) 2008/9 - 2010/11 Temporal Analysis by Month

Total Incidents 1st April 2008 - 31st March 2011 Temporal Analysis : Day

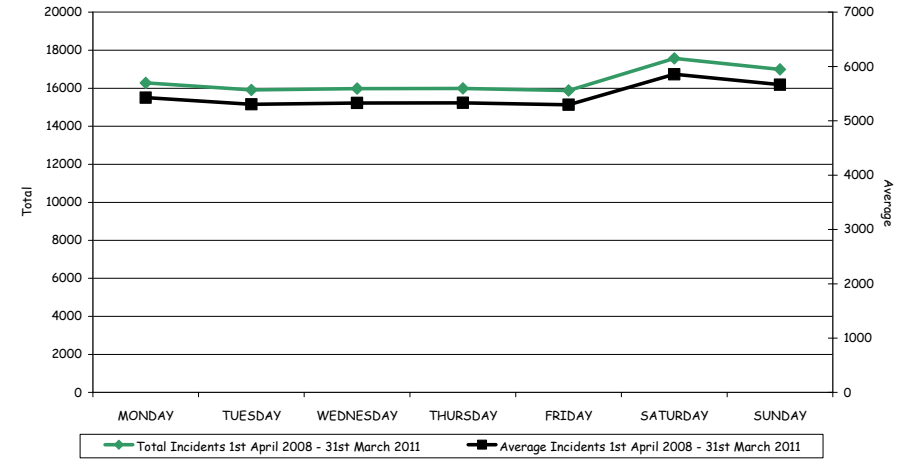


Figure 2: Total Incidents Reported to and Recorded by WMFS (Including Over The Border Calls) 2008/9 - 2010/11 Temporal Analysis by Day

- Total reported incidents remain at a relatively constant, elevated level March -July and then peak again, to a lesser extent between September - November. Levels remain stable throughout the week experiencing a slight increment over the weekend periods. Incident levels rise steadily from 05:00 hours, plateauing between 12.00 - 14.00hrs. From this point levels begin to rise again, reaching their highest point between 18.00 - 19.00 hours.
- Analysis of incidents according to local authority area 2008/9 - 2010/11 indicates that the majority have occurred in Birmingham (39%), followed by Sandwell (12%), Coventry and Dudley (both 11%), Walsall (10%), Wolverhampton (9%) and finally Solihull (5%). The number of over the border calls (where WMFS has attended an incident outside its brigade area in order to assist a neighbouring brigade) has remained relatively constant averaging approximately 2% over the period analysed. When total incidents are examined in terms of rate per 1,000 population however a slightly different picture emerges with Sandwell local authority consistently experiencing the highest rate (16.2 incidents per 1,000 population in 2008/9 and 15.4 incidents per 1,000 population in 2010/11).

Total Incidents 1st April 2008 - 31st March 2011 Temporal Analysis: Hour

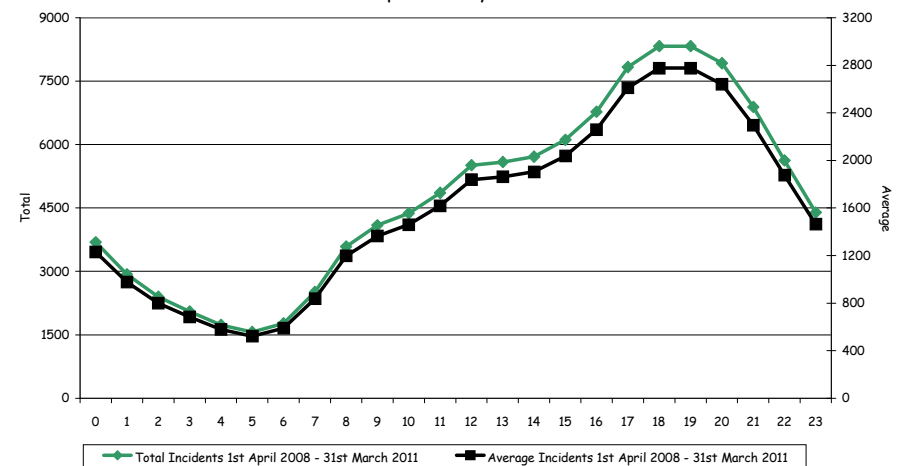


Figure 3: Total Incidents Reported to and Recorded by WMFS (Including Over The Border Calls) 2008/9 - 2010/11 Temporal Analysis by Hour